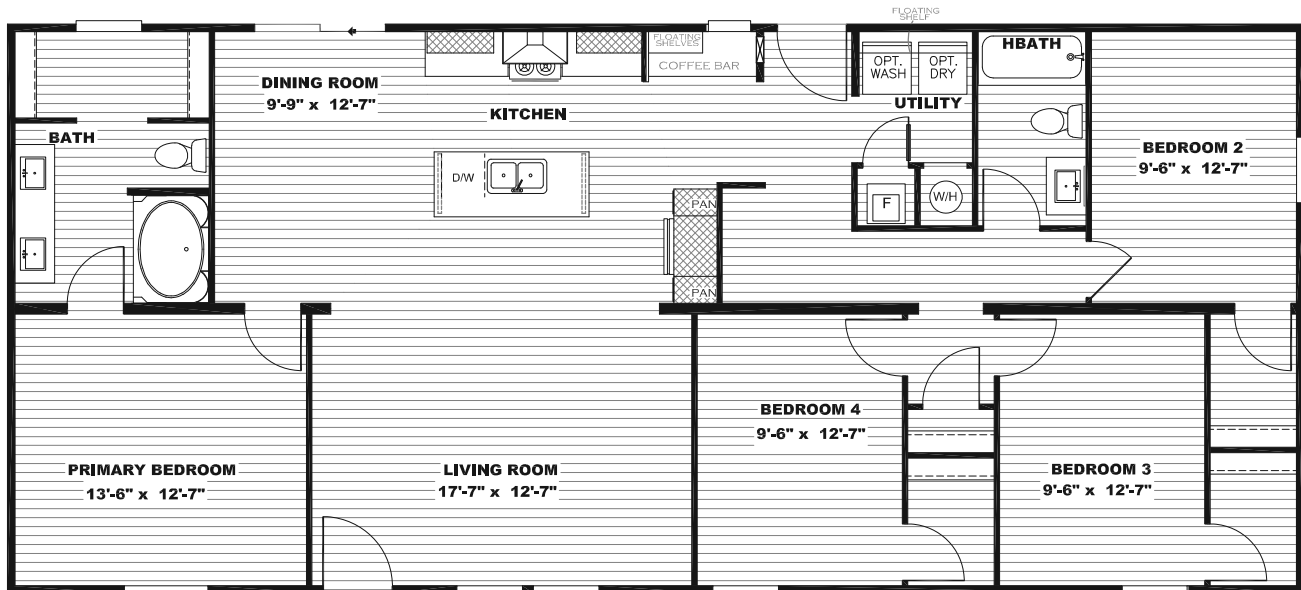




EXPERIENCE SERIES

Expedition

1,580 sq ft | 4 Bedrooms | 2 Bathrooms



2860

REV 1.23



The home series and floor plans indicated will vary by retailer and state. Your local Home Center can quote you on specific prices and terms of purchase for specific homes. Clayton Home Building Group invests in continuous product and process improvement. All home series, floor plans, specifications, dimension, features, materials, availability, and starting prices shown on this website are artist's renderings or estimates, and are subject to change without notice. imensions are nominal and length and width measurements are from exterior wall to exterior wall.



Standard Features EXPERIENCE SERIES

EXTERIOR FEATURES

OSB Wrap with House Wrap
8' Sidewalls with Flat Interior Ceilings
Hardie-Board Cement Fascia
Rip-Preventing Bottom Board
Endwall Decorative Duracraft Endcaps
Decorative Exterior Lantern Lights Front and Rear

FLOORS

16" On Center 2x6 Floor Joist
Shaw Upgraded Linoleum Throughout

WINDOWS AND DOORS

36x80 Cottage In-Swing Rear Door
36x80 Craftsman Style In-Swing Front Door
Lux Low E Thermo-Pane Windows
30" Raised 2 Panel Interior Doors
Full Double Metal Hinges on Interior Doors

ROOF/FRAME

Solid Steel I Beam with Full Length Outriggers
Fully Vented Soffit & Ridge Vents
6 Pattern Shingle Fastening

PLUMBING

Rheem 40 Gallon Dual-Element Water Heater
Pfister Metal Faucets Throughout
Water Cut Offs at Plumbing Fixtures
Whole House Water Cut Off
Exterior Water Faucet on Rear
Square Porcelain Sinks Throughout

HVAC

Energy Star Rated
Overhead Ducts
Ecobee Smart Thermostat
Upgraded Insulation To R33-11-22

INTERIOR FEATURES

Led Can Lights Throughout
Switched Lights in Walk-In Closets
Framed Décor Wall in Living Area
Duracraft Laundry Room Shelves
Coffee Bar Area in Some Models
Black Decorative Cabinet Pulls T/O
42" Duracraft Overhead Lined Cabinets
Picture Frame Style Duracraft Cabinet Doors

KITCHEN

Stainless Steel Appliances
Dishwasher Standard
Kitchen Island Standard
Double Bowl 8" Deep Stainless-Steel Kitchen Sink
Gooseneck Pfister Kitchen Faucet with Pull Out Sprayer
Stainless Steel Designer Rangehood
Drawer Bank on Each Side of Range
Pot and Pan Drawers in Each Drawer Bank
Fully Cabinet/Wall Encased Refrigerator
Plumbed for Icemaker

BATHS

3" Stile Mirror Trim
Double Lavs in Primary Baths
Furniture Style Vanity
Porcelain Over Steel Tub in Guest Bath
42x60 One Piece Fiberglass Soaker Tub/Shower