



OWNED AS
William A. May

- NOTES: THIS PROPERTY 1, 2, 10, 4 & 11, MUST USE EITHER OF THE THREE COMMON DRIVWAYS 1. ALL EASEMENTS PROVIDED AND AS SHOWN BY SHADDED AREAS ON SUBDIVISION PLAT AND ALL SUCH LOTS HAVE AND DO GRANT ACCESS TO SAME DRIVES THRU THEIR 25' FLAG POLE STRIP.
1. STRIP LOTS HAVING A 25' FLAG POLE STRIP ARE RESTRICTED FROM ANY IMPROVEMENTS TO SAID STRIPS SUCH AS FENCES AND OR BUILDINGS BUT NOT LIMITED TO SAME.
 2. ALL LOTS EXCEPT THE NUMBER LINE IS APPROXIMATELY 2' DEEP AND IS LOCATED WITHIN THE SHADDED UTILITY EASEMENT (SHADDED AREA) SHOWN HEREON.
 3. ALL EXISTING DRIVE AND WATER LINE LOCATIONS PROVIDED BY DELEGATOR AND DO NOT REPRESENT THE LOCATION OF ANY NEW DRIVE AND WATER LINES ARE PRIVATE AND WILL NOT BE MAINTAINED BY RICHMOND COUNTY.

% N/F WESTBROOK SUBD. %

RICHMOND COUNTY, GEORGIA

SEPTEMBER 27, 1994

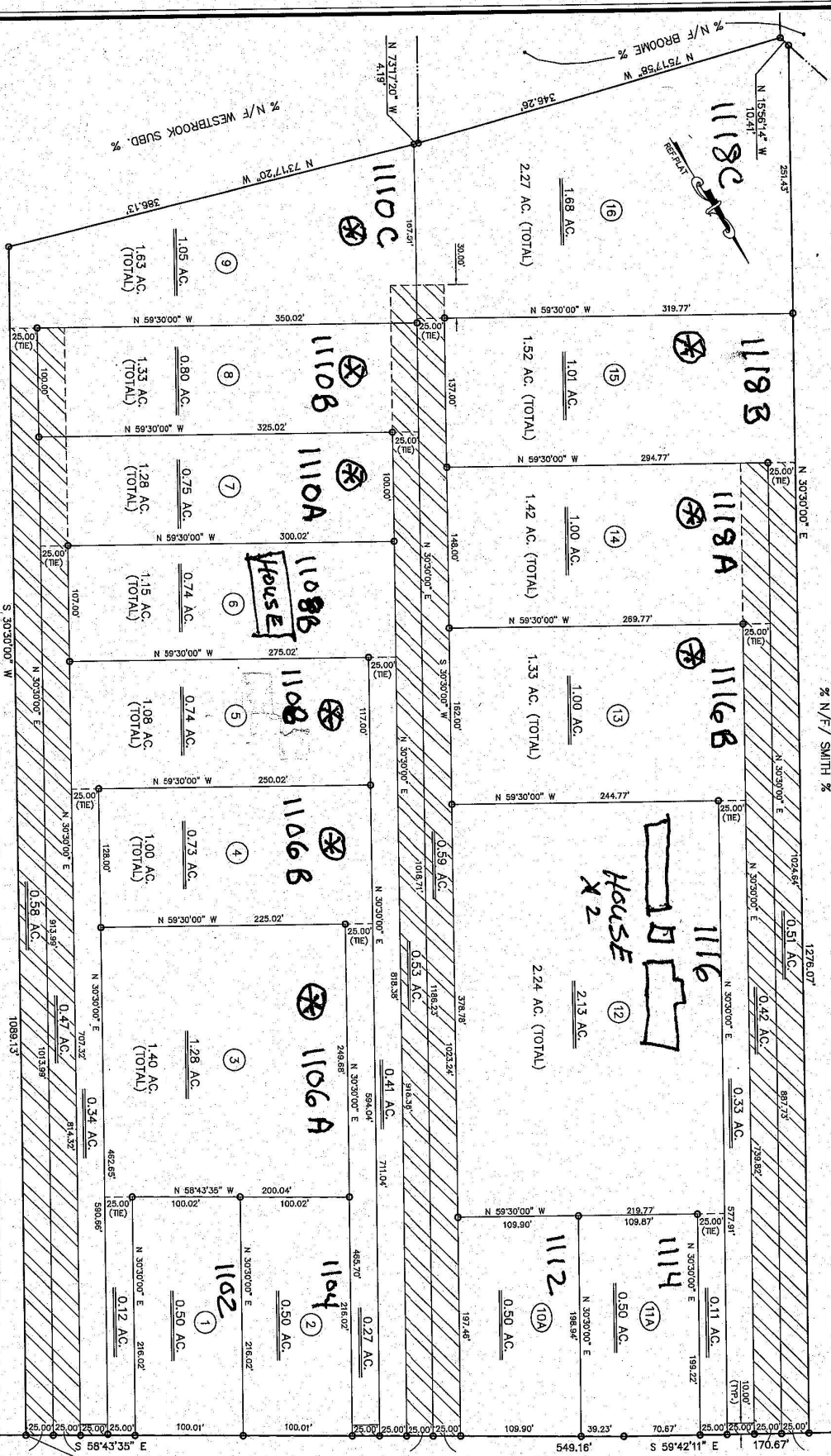
REV 9/29/93

W. R. Toole Engineers, Inc.

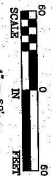
RONNIE BELL

COMPILED MAP FOR

HEPHZIBAH - McBEAN ROAD 80' R/W



% N/F/ SMITH %



Prepared By-

SEPTEMBER 27, 1994
REV 9/29/93 (note #5)
REV 9/29/93

W. R. Toole Engineers, Inc.
348 Greene Street - Phone (706) 725-1114 - Augusta, Georgia 30901

JOB #87746-CK WRM